



CorePro LEDtube EM/ Mains



CorePro LEDtube 1500mm UO 25.9W 840 T8

The CorePro LEDtube is an affordable LED solution suitable for replacing T8 fluorescent lamps. The product provides a natural lighting effect for use in general lighting applications, as well as instant energy savings – an environmentally friendly solution.

Warnings and Safety

• -

Product data

General Information	
Cap base	G13
Nominal lifetime	50,000 h
Switching Cycle	200,000
Lighting Technology	LED
Flux measurement reference	Sphere
Light Technical	
Colour Code	840 [CCT of 4000K]
Beam angle (nom.)	240 degree(s)
Luminous Flux	3,500 lm
Luminous efficacy (rated) (nom.)	135 lm/W
Colour designation	Cool White (CW)
Correlated Colour Temperature	4000 K
Colour consistency	<6
Colour rendering index (CRI)	80
LLMF at end of nominal lifetime (nom.)	70 %
Flickering value (PstLM)	1

Stroboscopic effect	0.4
Photobiological safety according to EN 62471	RG0
Operating and Electrical	
Input frequency	50 to 60 Hz
Power Consumption	25.9 W
Lamp current (nom.)	130 mA
Starting time (nom.)	0.5 s
Warm-up time to 60% light	0.5 s
Power Factor (Fraction)	0.9
Voltage (nom.)	220-240 V
LED alternative to fluorescent lamp power	58 W
Inrush current at mains	4.98
Max. lamp no. on MCB B type 10A – Mains	59
Max. lamp no. on MCB B type 10A – EM ballast without Compensation Capacitor.	59
Max. lamp no. on MCB B type 10A – EM ballast with Compensation Capacitor.	16

CorePro LEDtube EM/Mains

Max. lamp no. on MCB B type 16A — Mains	95
Max. lamp no. on MCB B type 16A – EM ballast without Compensation Capacitor.	95
Max. lamp no. on MCB B type 16A – EM ballast with Compensation Capacitor.	26
Ballast Compatibility	EM/Mains
Temperature	
Ambient temperature range	-20 to +45 °C
T-Case maximum (nom.)	55 °C
Controls and Dimming	
Dimmable	No
Mechanical and Housing	
Lamp Finish	Frosted
Bulb material	Glass
Product length	1,500 mm
Bulb shape	T8
Approval and Application	
Energy Efficiency Class	D
Energy-saving product	Yes
Approval marks	RoHS compliance CE marking KEMA Keur certificate

Energy consumption kWh/1,000 hours	26 kWh
EPREL registration number	1827719
CE mark	Yes
EU RoHS compliant	Yes

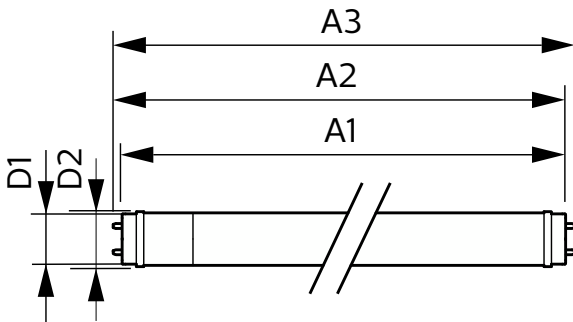
Application Conditions

Can it be used in closed luminaires	Yes
-------------------------------------	-----

Product Data

Order product name	CorePro LEDtube 1500mm UO 25.9W 840 T8
Full product name	CorePro LEDtube 1500mm UO 25.9W 840 T8
Full EOC	872016927866000
Order code	27866000
Material no. (12 NC)	929003746502
Numerator – quantity per pack	1
Net Weight (Piece)	0.270 kg
EAN/UPC — Product/Case	8720169278660
Numerator – packs per outer box	20
EAN/UPC - Case	8720169278677

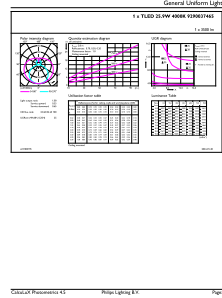
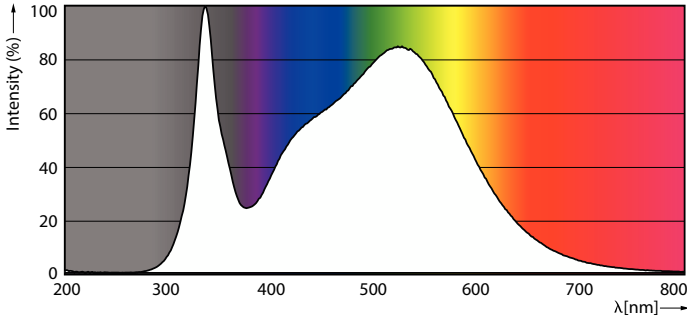
Dimensional drawing



Product	D1	D2	A1	A2	A3
CorePro LEDtube 1500mm UO 25.9W 840 T8	25.7 mm	28 mm	1,500 mm	1,507.1 mm	1,514.2 mm

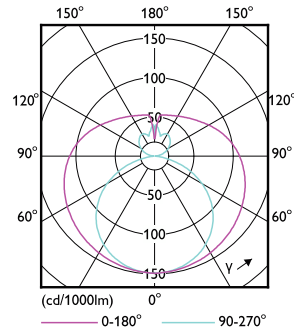
CorePro LEDtube EM/Mains

Photometric data



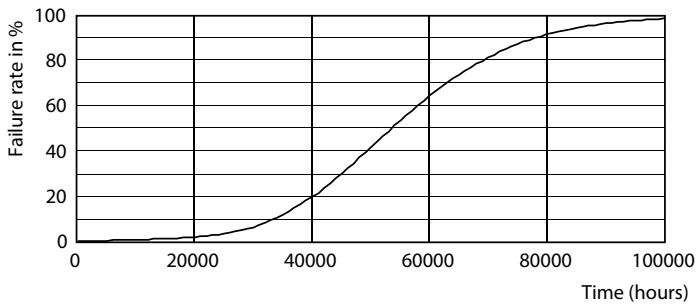
Spectral Power Distribution Colour - CorePro LEDtube 1500mm UO 25.9W 840 T8

General uniform lighting - CorePro LEDtube 1500mm UO 25.9W 840 T8

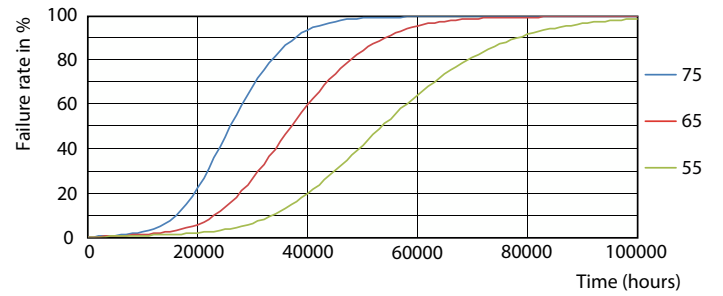


Light Distribution Diagram - CorePro LEDtube 1500mm UO 25.9W 840 T8

Lifetime



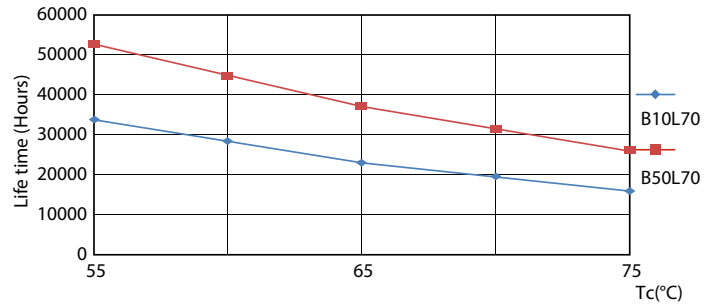
Life Expectancy Diagram



FailureRate

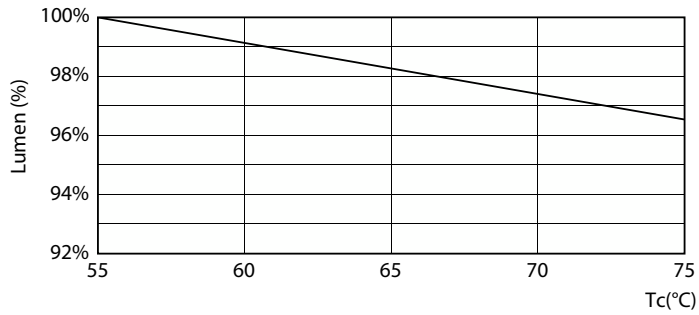
CorePro LEDtube EM/Mains

Lifetime



Lumen Maintenance Diagram - CorePro LEDtube 1500mm UO 25.9W 840 T8

LifetimeVsTc



Lumen Maintenance Diagram - CorePro LEDtube 1500mm UO 25.9W 840 T8

